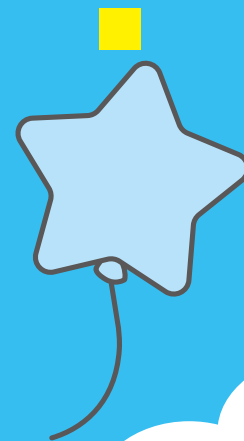
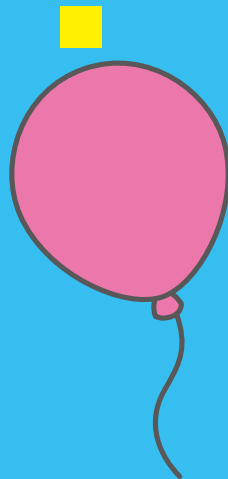
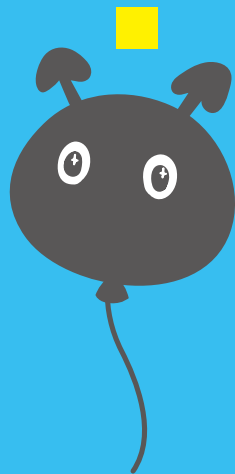
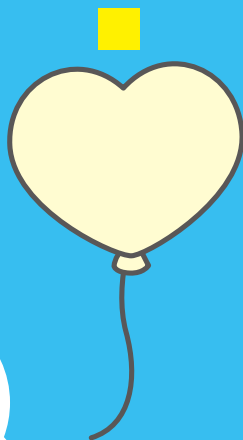
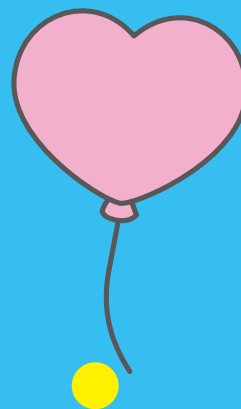
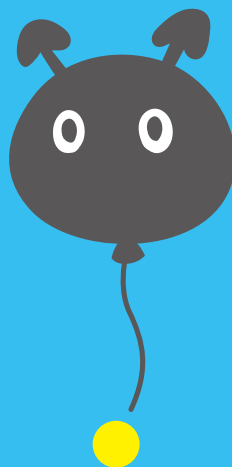
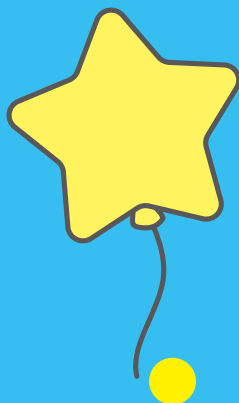
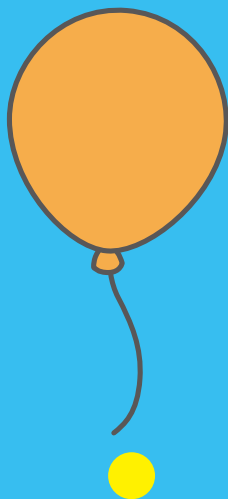


おなじ かたちの ふうせんは どれと どれかな？
 おなじ かたちの ^{まる}●と ^{しかく}■を ^{せん}—で むすぼう。

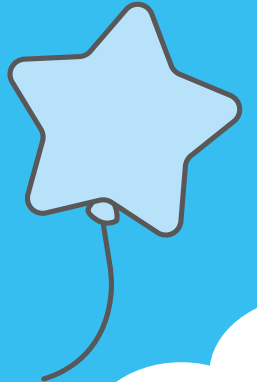
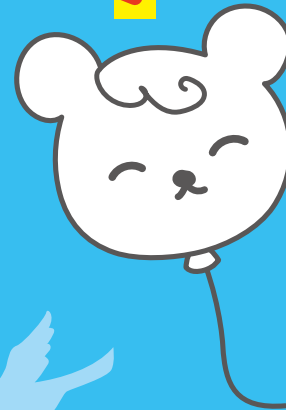
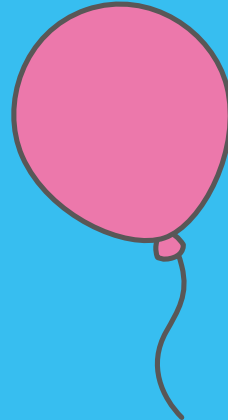
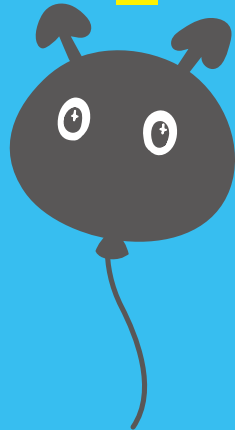
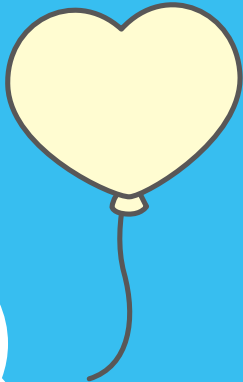
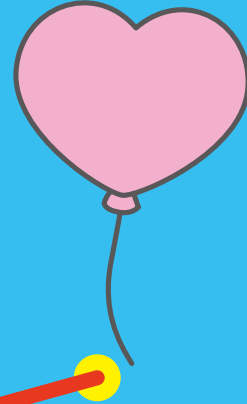
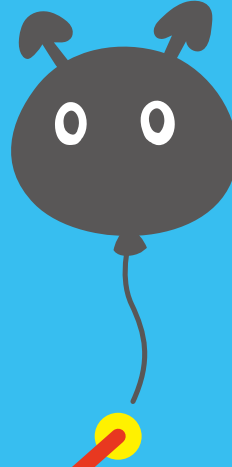
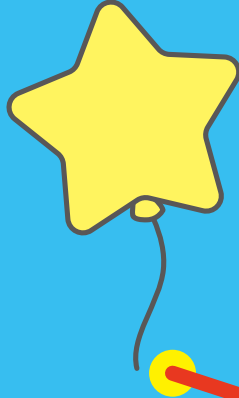
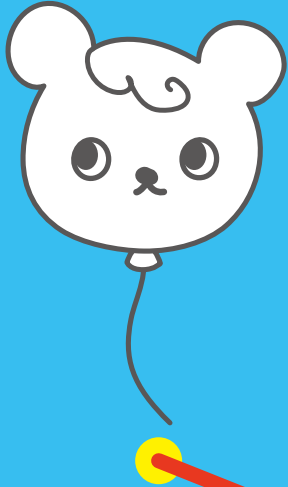
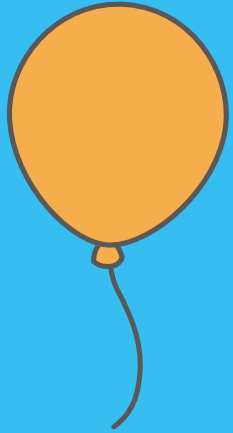


かんたん

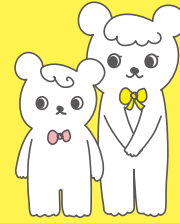
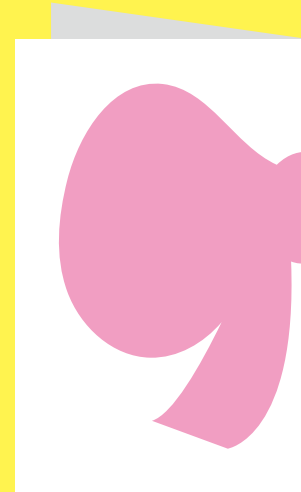
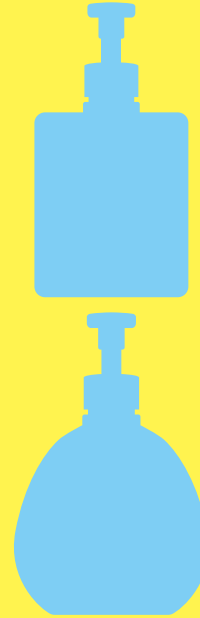
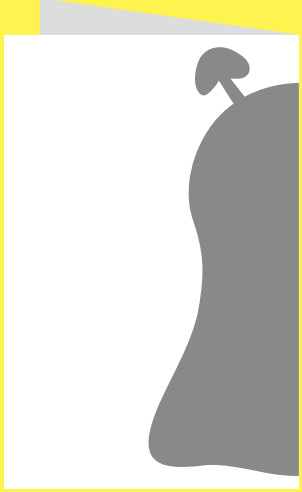


むずかしい

こたえあわせ



かみを 2つにおり、いろが ついている ところを きって
ひらくと、どの かたちになるかな。 しかく□に まる○を かこう。



こたえあわせ

